

i-PRO Configuration Tool

Operation Flow

1. Start Up and Log in

2. Select mode / functions

Basic mode

- Change IP Address
- Administrator Registration
- Download Files
- Upload Files
- Update Firmware
- Camera Restart

You need to select functions what you would like to perform.

Professional mode

- Change IP Address
- Administrator Registration
- Download Files
- Upload Files
- Update Firmware
- Camera Reset / Restart
- Configure Cameras
- Configure Recorders
- Send a CGI List
- Certification Management
- Ext. Software Management
- Status of Cameras

3. Device detection and connection

4. Main (Home) Screen

Perform various operations

1. Start Up and Log in

Start Menu on Windows OS ->
[i-PRO] -> [i-PRO Configuration Tool]



2. Select mode / functions

Select mode / click the function what you would like to operate and press "Next".

3. Device detection and connection

To connect to the device, you need to enter the username and password of the device.

4. Main (Home) Screen

(a) <Basic mode / Professional mode> common function

- (i) [Hamburger Icon] Switch between icon display and detailed display of the operation menu.
- (ii) [Select Menu] Select function menu.
- (iii) [Change IP Address] Set the IP address of the device.
- (iv) [Administrator Registration] Perform the initial settings of the device administrator.
- (v) [Download Files] Perform device settings / log file download
(You can also create a configuration report)
- (vi) [Upload Files] Upload the setting file to the device.
- (vii) [Update Firmware] Update the firmware on the device.
- (viii) [Camera Restart] Restart the cameras.

(b) <Professional mode> function

- (i) [Configure Cameras] Set multiple cameras from one unit.
- (ii) [Configure Recorders] Configure recorder settings (offline)
(Use the basic mode "Upload Files" to send settings to the device.)
- (iii) [Send a CGI List] Send CGI list to device
- (iv) [Certification Management] Manage certification for devices.
- (v) [Ext. Software Management] Configure extension software / license settings.
- (vi) [Camera Reset / Restart] Initialize / restart the cameras.
- (vii) [Status of Cameras] Retrieves / displays of camera operating status.

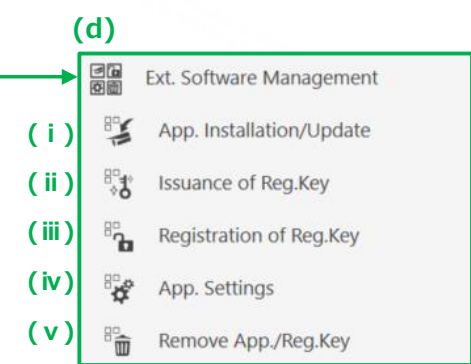
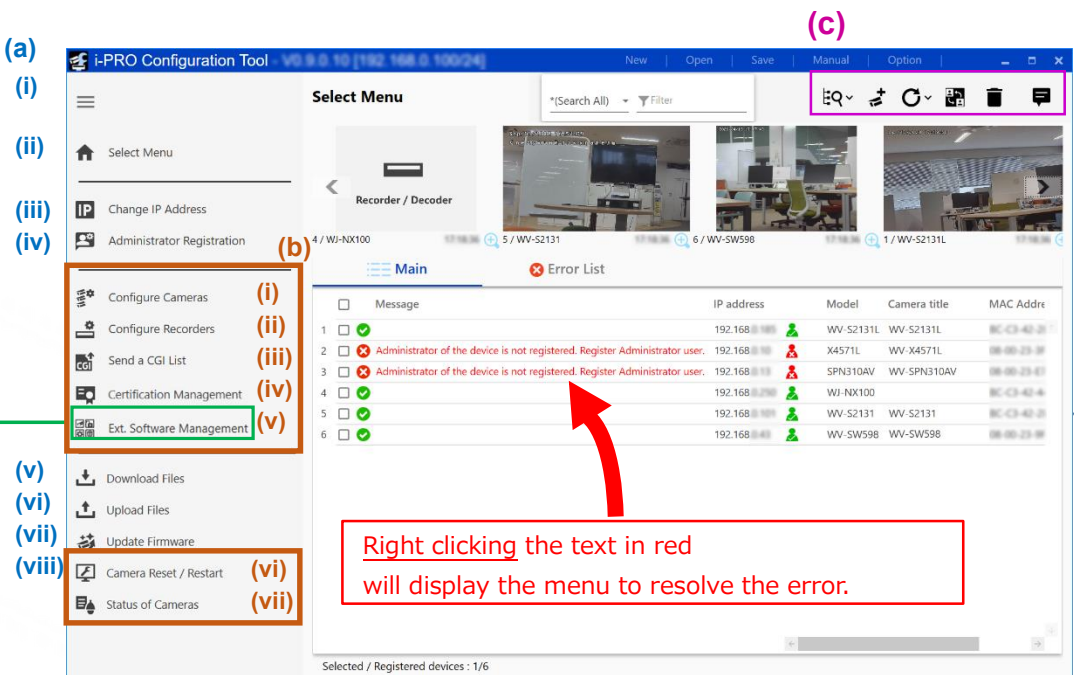
(c) Operation menu



(i) (ii) (iii) (iv) (v) (vi)

- (i) [Auto Device Detection] Devices on your own / other subnets can be detected and added
- (ii) [Manual Device Addition] Add cameras (offline)
- (iii) [Reload] Update the device list / thumbnail image view.
- (iv) [Credential Settings] Change Username and Password to access the devices.
- (v) [Delete Devices] Delete the devices specified in the device list.
- (vi) [Notice] If there is notification, it will be displayed at the bottom right of the screen.

Please note that the function for changing the settings of devices such as cameras and recorders is in "professional" mode so that you will not accidentally change the detailed settings of your device.



Item	Description
Common to Communications	Waiting order to start communication with target device.
	Communication with target device is in progress.
	Communication with the target device successfully.
	Communication with the target device failed.
Administrator Registration Status	Administrator is already registered devices.
	Administrator is not registered devices.
	Administrator state unknown devices.(Uncommunicated device)
Failover	The operation is currently running in the failover mode.
Communication Status	Devices under HTTPS communication status.
	(There is no icon for HTTP communication status)

(d) Sub menu of "Ext. Software Management"

- (i) [App. Installation/Update] Install / update the Ext. Software
Download the latest version of "Extension software Package *2 and unzip it. Specify the unzipped folder in the Folder field.
- (ii) [Issuance of Reg. Key] Issue a Reg. Key (Registration Key)
Issue a Reg. Key by entering the obtained Activation Key No./Registration ID and enter the User ID/Password of Key Management System *3.
- (iii) [Registration of Reg. Key] Register the issued the Reg. Key
- (iv) [App. Settings] Configure the application settings
- (v) [Remove App./Reg. Key] Delete the application / Reg. key

*2 : Please obtain the Extension Software Package from the following URL.
https://i-pro.com/products_and_solutions/en/surveillance/learning-and-support/tools/ict/extension-software-package

*3 : This function will be not available in case of maintenance of Key Management System or

Professional mode

Basic mode

Download Files

It is possible to download the selected files. When [Start] button is clicked, Download Files will be started. Are you sure to continue?
* Please use the "Log Files" only when the manufacturer requests to send the log.

- ☒ Configuration Files
 - ☐ JPEG still images (For cameras only)
 - ☐ Log Files
- ☐ Create a new Report of the Device List and Image View.

Upload Files

Select "Category" of the devices to which the configuration files is to be uploaded. When [Start] button is clicked, Upload Files will be started. Are you sure to continue?

Category: Recorder Configuration File

File name:

☐ Overwrite network settings.

Update Firmware

Select firmware folder

Folder:

Configure Cameras

Basic

Camera title: WV-S1112あああ

Camera title on screen display: Off

Camera title on screen: Off

Date/time display setting: 24h

OSD Position: Upper left

Upper left: Off

Language: Auto

Upside-down: Off

Date/time: PC Time

Date/time display format: Mmm/DD/YYYY

Configure Recorders

Recorder Settings

Recorder title: WV-S1112あああ

Recorder title on screen display: Off

Recorder title on screen: Off

Date/time display setting: 24h

OSD Position: Upper left

Upper left: Off

Language: Auto

Upside-down: Off

Date/time: PC Time

Date/time display format: Mmm/DD/YYYY

Main ONVIF Conformant Device

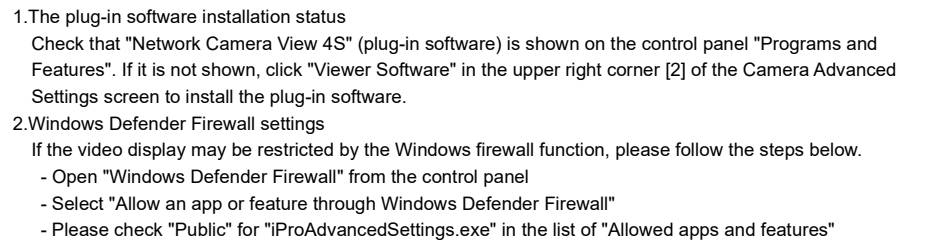
ONVIF® conformant devices are displayed in the "ONVIF conformant Device" tab.

The following ONVIF compliant devices have been confirmed to work with this software.

AXIS: M1135, M3047-P, M3066-V, M5065, P1378, P1455-LE, Q1614

Hanwha: PNO-A6081R, PND-A6081RV, QNB-6002, QNF-8010, XNF-8010R

In case of Stream video (1)-(4) is not displayed on the Camera Advanced Settings screen or Expansion Software Settings screen. (If the screen remains black as shown in [1] below), please check the following two points.



i-PRO Configuration Tool is the software that is designed to configure the settings of network disk recorders, network interface units (encoders) and network cameras using a PC via a network. This software is assumed to be used by system design and network management experts.

Refer to the provided “Available function list for each compatible device” (PDF file) about the compatible devices.

Descriptions are based on the assumption that Microsoft® Windows® 10 Pro. In addition, the screens shown in this manual may include the previous versions within the scope of the explanation.

It is recommended to install this software on a PC that meets the following system requirements.

OS ¹	Microsoft® Windows® 11 Pro ^{2, 3} Microsoft® Windows® 10 Pro 64-bit ^{2, 3} Microsoft® Windows® 10 Pro 32-bit ³
CPU	Intel® Core™ i5 2.5 GHz or faster
Memory	8 GB or more
Required hard disk	250 MB of disk space is necessary for installation of this software. ⁴

*1: This software is designed based on the default style of Microsoft® Windows® 10 and 100% display scaling settings. It is not recommended to change the display style from the default. When the display style or the font size is changed from the default, it may be possible that the layout of this software collapses. If the screen or image view of this software is not displayed correctly, change the display scaling to 100%.

*2: Operates in WOW64 (32-bit mode).

*3: Supports “Desktop Mode” only.

*4: It is necessary to prepare other disk space exclusively as storage for files downloaded from the devices in addition to the required disk space for installation of this software.

*5: The network settings on the PC must meet those of the network environment where the PC is connected.

- This software must be installed or started by an administrator of the PC. Otherwise, any problems will not be covered by the warranty.
- For installation, be sure to execute it from "setup.exe" with the zip file fully expanded.
It is not possible to install from a state where the contents are only visible with the without extracting the zip file.
- Do not use other applications, especially heavy load types, while this software is running. Otherwise, the CPU overload and the shortage of resources will cause malfunction and insufficient performance.
- When using other tools with automatic device detection function (Easy IP Setup Tool [EasyIpSetup.exe], WV-ASM300 etc.) at the same time, the device detection function of this software cannot be used.
- Enter 1-byte alphanumeric characters for user names. If 2-byte characters are included, installation may fail.

- Adobe and Reader are either registered trademarks or trademarks of Adobe Systems Incorporated in the United States and/or other countries.
- Microsoft, Windows, ActiveX and DirectX are either registered trademarks or trademarks of Microsoft Corporation in the United States and other countries.
- Intel and Core i5 are trademarks or registered trademarks of Intel Corporation or its subsidiaries in the United States and other countries.
- ONVIF is a registered trademark of ONVIF, Inc.
- Other names of companies and products contained in these operating instructions may be trademarks or registered trademarks of their respective owners

Except for open source software licensed under GPL/LGPL and so on, distributing, copying, disassembling, reverse compiling, reverse engineering, and also exporting in violation of export laws of the software provided with this product, are all expressly prohibited.

IN NO EVENT SHALL MATSUSHITA ELECTRIC INDUSTRIAL CO., LTD. BE LIABLE TO ANY PARTY OR ANY PERSON, EXCEPT FOR REPLACEMENT OR REASONABLE MAINTENANCE OF THE PRODUCT, FOR THE CASES, INCLUDING BUT NOT LIMITED TO BELOW:

(1)ANY DAMAGE AND LOSS, INCLUDING WITHOUT LIMITATION, DIRECT OR INDIRECT, SPECIAL, CONSEQUENTIAL OR EXEMPLARY, ARISING OUT OF OR RELATING TO THE PRODUCT;

(2)PERSONAL INJURY OR ANY DAMAGE CAUSED BY INAPPROPRIATE USE OR NEGLIGENT OPERATION OF THE USER;

(3)UNAUTHORIZED DISASSEMBLE, REPAIR OR MODIFICATION OF THE PRODUCT BY THE USER;

(4)ANY PROBLEM, CONSEQUENTIAL INCONVENIENCE, OR LOSS OR DAMAGE, ARISING OUT OF THE SYSTEM COMBINED BY THE DEVICES OF THIRD PARTY;

This product contains open source software as follows.

Software name	Copyright	License
System.Data.SQLite	System.Data.SQLite	MS-PL
DotNetZip	DotNetZip	MS-PL
MahApps.Metro	Mahapps	MIT License (MIT)
ControlzEx	Jan Karger, Bastian Schmidt	MIT License (MIT)
MaterialDesignThemes	James Willock, Mulholland Software and Contributors	MIT License (MIT)
MaterialDesignThemes.MahApps	James Willock, Mulholland Software and Contributors	MIT License (MIT) MS-PL
MaterialDesignColors	James Willock, Mulholland Software and Contributors	MIT License (MIT) MS-PL

The full text of the corresponding license terms is below.

This license governs use of the accompanying software. If you use the software, you accept the license. If you do not accept the license, do not use the software.

1. Definitions

The terms "reproduce," "reproduction," "derivative works," and "distribution" have the same meaning here as under U.S. copyright law.

A "contribution" is the original software, or any additions or changes to the software.

A "contributor" is any person that distributes its contribution under this license.

"Licensed patents" are a contributor's patent claims that read directly on its contribution.
2. Grant of Rights

(A) Copyright Grant- Subject to the terms of this license, including the license conditions and limitations in section 3, each contributor grants you a non-exclusive, worldwide, royalty-free copyright license to reproduce its contribution, prepare derivative works of its contribution, and distribute its contribution or any derivative works that you create.

(B) Patent Grant- Subject to the terms of this license, including the license conditions and limitations in section 3, each contributor grants you a non-exclusive, worldwide, royalty-free license under its licensed patents to make, have made, use, sell, offer for sale, import, and/or otherwise dispose of its contribution in the software or derivative works of the contribution in the software.
3. Conditions and Limitations

(A) No Trademark License This license does not grant you rights to use any contributors' name, logo, or trademarks.

(B) If you bring a patent claim against any contributor over patents that you claim are infringed by the software, your patent license from such contributor to the software ends automatically.

(C) If you distribute any portion of the software, you must retain all copyright, patent, trademark, and attribution notices that are present in the software.

(D) If you distribute any portion of the software in source code form, you may do so only under this license by including a complete copy of this license with your distribution. If you distribute any portion of the software in compiled or object code form, you may only do so under a license that complies with this license.

(E) The software is licensed "as-is." You bear the risk of using it. The contributors give no express warranties, guarantees or conditions. You may have additional consumer rights under your local laws which this license cannot change. To the extent permitted under your local laws, the contributors exclude the implied warranties of merchantability, fitness for a particular purpose and non-infringement.

Unless indicated otherwise on a per-file basis all source and documentation herein is licensed under the MIT license. Some included code is licensed under MS-PL which is compatible with the terms of MIT.

Permission is hereby granted, free of charge, to any person obtaining a copy of this software and associated documentation files (the "Software"), to deal in the Software without restriction, including without limitation the rights to use, copy, modify, merge, publish, distribute, sublicense, and/or sell copies of the Software, and to permit persons to whom the Software is furnished to do so, subject to the following conditions:

The above copyright notice and this permission notice shall be included in all copies or substantial portions of the Software.

THE SOFTWARE IS PROVIDED "AS IS", WITHOUT WARRANTY OF ANY KIND, EXPRESS OR IMPLIED, INCLUDING BUT LIMITED TO THE WARRANTIES OF MERCHANTABILITY, FITNESS FOR A PARTICULAR PURPOSE AND NONINFRINGEMENT. IN NO EVENT SHALL THE AUTHORS OR COPYRIGHT HOLDERS BE LIABLE FOR ANY CLAIM, DAMAGES OR OTHER LIABILITY, WHETHER IN

AN ACTION OF CONTRACT, TORT OR OTHERWISE, ARISING FROM, OUT OF OR IN CONNECTION WITH THE SOFTWARE OR THE USE OR OTHER DEALINGS IN THE SOFTWARE.

Apache License

Version 2.0, January 2004

<http://www.apache.org/licenses/>

TERMS AND CONDITIONS FOR USE, REPRODUCTION, AND DISTRIBUTION

1. Definitions.

"License" shall mean the terms and conditions for use, reproduction, and distribution as defined by Sections 1 through 9 of this document. "Licensor" shall mean the copyright owner or entity authorized by the copyright owner that is granting the License. "Legal Entity" shall mean the union of the acting entity and all other entities that control, are controlled by, or are under common control with that entity. For the purposes of this definition, "control" means (i) the power, direct or indirect, to cause the direction or management of such entity, whether by contract or otherwise, or (ii) ownership of fifty percent (50%) or more of the outstanding shares, or (iii) beneficial ownership of such entity. "You" (or "Your") shall mean an individual or Legal Entity exercising permissions granted by this License. "Source" form shall mean the preferred form for making modifications, including but not limited to software source code, documentation source, and configuration files. "Object" form shall mean any form resulting from mechanical transformation or translation of a Source form, including but not limited to compiled object code, generated documentation, and conversions to other media types. "Work" shall mean the work of authorship, whether in Source or Object form, made available under the License, as indicated by a copyright notice that is included in or attached to the work (an example is provided in the Appendix below). "Derivative Works" shall mean any work, whether in Source or Object form, that is based on (or derived from) the Work and for which the editorial revisions, annotations, elaborations, or other modifications represent, as a whole, an original work of authorship. For the purposes of this License, Derivative Works shall not include works that remain separable from, or merely link (or bind by name) to the interfaces of, the Work and Derivative Works thereof.

"Contribution" shall mean any work of authorship, including the original version of the Work and any modifications or additions to that Work or Derivative Works thereof, that is intentionally submitted to Licensor for inclusion in the Work by the copyright owner or by an individual or Legal Entity authorized to submit on behalf of the copyright owner. For the purposes of this definition, "submitted" means any form of electronic, verbal, or written communication sent to the Licensor or its representatives, including but not limited to communication on electronic mailing lists, source code control systems, and issue tracking systems that are managed by, or on behalf of, the Licensor for the purpose of discussing and improving the Work, but excluding communication that is conspicuously marked or otherwise designated in writing by the copyright owner as "Not a Contribution." "Contributor" shall mean Licensor and any individual or Legal Entity on behalf of whom a Contribution has been received by Licensor and subsequently incorporated within the Work.

2. Grant of Copyright License. Subject to the terms and conditions of this License, each Contributor hereby grants to You a perpetual, worldwide, non-exclusive, no-charge, royalty-free, irrevocable copyright license to reproduce, prepare Derivative Works of, publicly display, publicly perform, sublicense, and distribute the Work and such Derivative Works in Source or Object form.

3. Grant of Patent License. Subject to the terms and conditions of this License, each Contributor hereby grants to You a perpetual, worldwide, non-exclusive, no-charge, royalty-free, irrevocable (except as stated in this section) patent license to make, have made, use, offer to sell, sell, import, and otherwise transfer the Work, where such license applies only to those patent claims licensable by such Contributor that are necessarily infringed by their Contribution(s) alone or by combination of their Contribution(s) with the Work to which such Contribution(s) was submitted. If You institute patent litigation against any entity (including a cross-claim or counterclaim in a lawsuit) alleging that the Work or a Contribution incorporated within the Work constitutes direct or contributory patent infringement, then any patent licenses granted to You under this License for that Work shall terminate as of the date such litigation is filed.

4. Redistribution. You may reproduce and distribute copies of the Work or Derivative Works thereof in any medium, with or without modifications, and in Source or Object form, provided that You meet the following conditions:

(a) You must give any other recipients of the Work or Derivative Works a copy of this License; and

(b) You must cause any modified files to carry prominent notices stating that You changed the files; and

(c) You must retain, in the Source form of any Derivative Works that You distribute, all copyright, patent, trademark, and attribution notices from the Source form of the Work, excluding those notices that do not pertain to any part of the Derivative Works; and

(d) If the Work includes a "NOTICE" text file as part of its distribution, then any Derivative Works that You distribute must include a readable copy of the attribution notices contained within such NOTICE file, excluding those notices that do not pertain to any part of the Derivative Works, in at least one of the following places: within a NOTICE text file distributed as part of the Derivative Works; within the Source form or documentation, if provided along with the Derivative Works; or, within a display generated by the Derivative Works, if and wherever such third-party notices normally appear. The contents of the NOTICE file are for informational purposes only and do not modify the License. You may add Your own attribution notices within Derivative Works that You distribute, alongside or as an addendum to the NOTICE text from the Work, provided that such additional attribution notices cannot be construed as modifying the License. You may add Your own copyright statement to Your modifications and may provide additional or different license terms and conditions for use, reproduction, or distribution of Your modifications, or for any such Derivative Works as a whole, provided Your use, reproduction, and distribution of the Work otherwise complies with the conditions stated in this License.

5. Submission of Contributions. Unless You explicitly state otherwise, any Contribution intentionally submitted for inclusion in the Work by You to the Licensor shall be under the terms and conditions of this License, without any additional terms or conditions.

Notwithstanding the above, nothing herein shall supersede or modify the terms of any separate license agreement you may have executed with Licensor regarding such Contributions.

6. Trademarks. This License does not grant permission to use the trade names, trademarks, service marks, or product names of the Licensor, except as required for reasonable and customary use in describing the origin of the Work and reproducing the content of the NOTICE file.

7. Disclaimer of Warranty. Unless required by applicable law or agreed to in writing, Licensor provides the Work (and each Contributor provides its Contributions) on an "AS IS" BASIS, WITHOUT WARRANTIES OR CONDITIONS OF ANY KIND, either express or implied, including, without limitation, any warranties or conditions of TITLE, NON-INFRINGEMENT, MERCHANTABILITY, or FITNESS FOR A PARTICULAR PURPOSE. You are solely responsible for determining the appropriateness of using or redistributing the Work and assume any risks associated with Your exercise of permissions under this License.

8. Limitation of Liability. In no event and under no legal theory, whether in tort (including negligence), contract, or otherwise, unless required by applicable law (such as deliberate and grossly negligent acts) or agreed to in writing, shall any Contributor be liable to You

for damages, including any direct, indirect, special, incidental, or consequential damages of any character arising as a result of this License or out of the use or inability to use the Work (including but not limited to damages for loss of goodwill, work stoppage, computer failure or malfunction, or any and all other commercial damages or losses), even if such Contributor has been advised of the possibility of such damages.

9. Accepting Warranty or Additional Liability. While redistributing the Work or Derivative Works thereof, You may choose to offer, and charge a fee for, acceptance of support, warranty, indemnity, or other liability obligations and/or rights consistent with this License. However, in accepting such obligations, You may act only on Your own behalf and on Your sole responsibility, not on behalf of any other Contributor, and only if You agree to indemnify, defend, and hold each Contributor harmless for any liability incurred by, or claims asserted against, such Contributor by reason of your accepting any such warranty or additional liability.

END OF TERMS AND CONDITIONS

APPENDIX: How to apply the Apache License to your work.

To apply the Apache License to your work, attach the following boilerplate notice, with the fields enclosed by brackets "{}" replaced with your own identifying information. (Don't include the brackets!) The text should be enclosed in the appropriate comment syntax for the file format. We also recommend that a file or class name and description of purpose be included on the same "printed page" as the copyright notice for easier identification within third-party archives.

Copyright 2019 Thomas Levesque Licensed under the Apache License, Version 2.0 (the "License"); you may not use this file except in compliance with the License. You may obtain a copy of the License at <http://www.apache.org/licenses/LICENSE-2.0>

Unless required by applicable law or agreed to in writing, software distributed under the License is distributed on an "AS IS" BASIS, WITHOUT WARRANTIES OR CONDITIONS OF ANY KIND, either express or implied. See the License for the specific language governing permissions and limitations under the License.

License Agreement

For Open Source Computer Vision Library

(3-clause BSD License)

Copyright (C) 2000-2020, Intel Corporation, all rights reserved.

Copyright (C) 2009-2011, Willow Garage Inc., all rights reserved.

Copyright (C) 2009-2016, NVIDIA Corporation, all rights reserved.

Copyright (C) 2010-2013, Advanced Micro Devices, Inc., all rights reserved.

Copyright (C) 2015-2016, OpenCV Foundation, all rights reserved.

Copyright (C) 2015-2016, Itseez Inc., all rights reserved.

Copyright (C) 2019-2020, Xperience AI, all rights reserved.

Third party copyrights are property of their respective owners.

Redistribution and use in source and binary forms, with or without modification, are permitted provided that the following conditions are met:

* Redistributions of source code must retain the above copyright notice, this list of conditions and the following disclaimer.

* Redistributions in binary form must reproduce the above copyright notice, this list of conditions and the following disclaimer in the documentation and/or other materials provided with the distribution.

* Neither the names of the copyright holders nor the names of the contributors may be used to endorse or promote products derived from this software without specific prior written permission.

This software is provided by the copyright holders and contributors "as is" and any express or implied warranties, including, but not limited to, the implied warranties of merchantability and fitness for a particular purpose are disclaimed.

In no event shall copyright holders or contributors be liable for any direct, indirect, incidental, special, exemplary, or consequential damages (including, but not limited to, procurement of substitute goods or services; loss of use, data, or profits; or business interruption) however caused and on any theory of liability, whether in contract, strict liability, or tort (including negligence or otherwise) arising in any way out of the use of this software, even if advised of the possibility of such damage.

Collection of Usage Data

This software may collect data about utilization of this software and send it to i-PRO Co., Ltd. In particular, we use this data to improve our products and services. You can stop this data collection by unchecking "Send anonymous data to improve this software and user experience." checkbox.

The following is an example of the data collected by this software. We do not collect data about your personal information.

- Part number detected by this software and the operating status of each device
- Basic information of the PC on which this software is running (OS type / locale information / memory / screen size)
- Operating status of this software

Transfer/disposal

- Transfer this software according to the "Software License Agreement" to be displayed on the installation screen.
- When disposing of a PC on which this software has been installed, be sure to initialize the settings and uninstall this software. If this software is uninstalled without initializing the settings, there is a risk of information leakage due to the setting information being remained inside the PC. Even in the case of transfer or repair, carry out the above procedure as necessary.
 - If the PC on which this software is installed or the storage device connected to the PC is to be passed to someone for transfer, disposal, repair and other reasons, pay careful attention to the data handled there, and it is your responsibility to transfer, dispose, and repair. When abandoning the storage media, it is recommended to destroy data physically after deleting it.

Network Security

As you will use this product connected to a network, your attention is called to the following security risks.

(1) Leakage or theft of information through this product

(2) Use of this product for illegal operations by persons with malicious intent

(3) Interference with or stoppage of this product by persons with malicious intent

It is your responsibility to take precautions such as those described below to protect yourself against the above network security risks.

• Use this product in a network secured by a firewall, etc.

• If this product is connected to a network that includes PCs, make sure that the system is not infected by computer viruses or other malicious entities (using a regularly upgraded anti-virus program, anti-spyware program, etc.).

• Protect your network against unauthorized access by restricting users to those who log in with an authorized user name and password.

• Apply measures such as user authentication to protect your network against leakage or theft of information, including image data, authentication information (user names and passwords), alarm mail information, FTP server information.

About "Grid Display" function

The grid display function is for viewing angle adjustment for some extension software.

Appropriate object size is published on our website<Control No.: C0320>.



<https://i-pro.com/global/en/surveillance/training-support/support/technical-information>

Note: In case of using in Japan, please refer the following.

https://i-pro.com/products_and_solutions/ja/surveillance/learning-and-support/knowledge-base/technical-information

i-PRO Co., Ltd.

Fukuoka, Japan

<https://www.i-pro.com/>

© i-PRO Co., Ltd. 2023

av1008-72